

## Cazenovia Park

### Unique Attributes

Cazenovia Park has great charm. The park’s scenic pathways and pastoral views remain largely intact. The park is at the center of the surrounding neighborhood and its setting remains very much as it was when it opened. Cazenovia Creek is a defining and accessible water feature of the park. The park is also well connected to the Olmsted parkway system in South Buffalo.

### Key Missing or Lost Elements

- The historic lake bays and lagoons.
- The integrity of the southwest entrance to the park.
- The smaller stone pedestrian bridge and related eastern vehicular roadway.
- The formal gardens at entryway from Seneca Street.

- The historical Concourse and surrounding area.
- Panoramic views across the creek/lake system.  
(See Figures 51-55)

### Key Assumptions

- Portions of the Lake should be restored or re-interpreted.
- All structures for non park-dependent uses will be eventually relocated from the park.
- Innovative and ecologically-friendly park re-designs can enhance flood control as well as the landscape integrity of the park.
- Golf house and parking lot to be relocated to the Seneca Street corner of the Golf Course.

### Suggested Areas of Focus

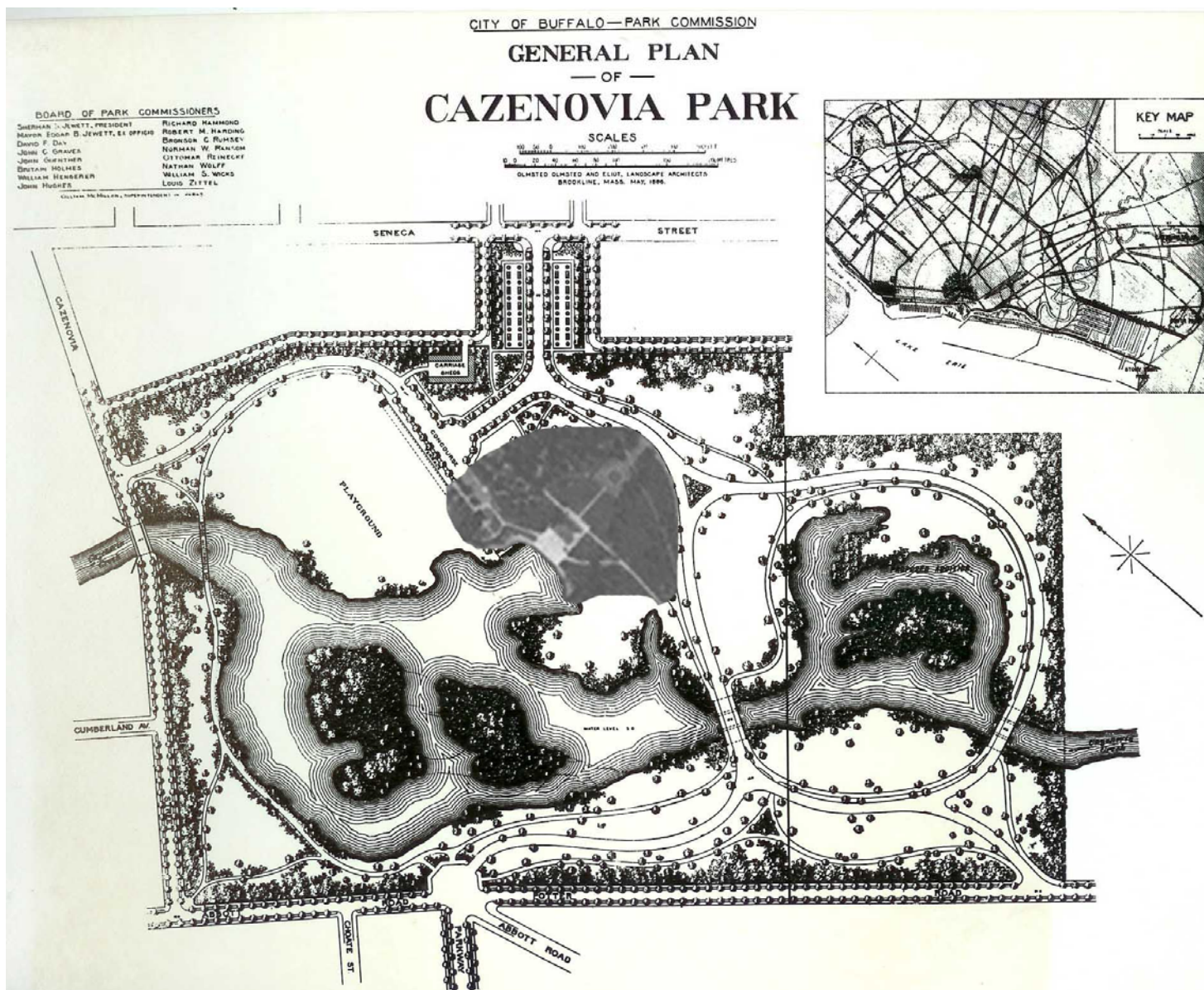
The Charette process revealed the following grouping of the projects currently under consideration by the BOPC and



Figure 51 - Historic postcard of the lagoon in front of the Casino



Figure 52 - The filled in lagoon inhibits the Casino's historic function as a boat house



32 Figure 53 - 1888-1920 Olmsted design for Cazenovia Park

those suggested by the charette team:

- Restore the central Casino area—the civic “heart” of the park, by restoring and reinterpreting the Cazenovia lake.
- Enhance the park experience for pedestrians via walkways and views.
- Practice ecologically sustainable techniques for creek edge management, water and flood control management, and general park maintenance.

**Preliminary Recommended Projects**

**Redevelop the Center/Casino Area**

- Reinterpret lost water features/create pond behind the Casino.
- Renovate Casino building and adjoining gardens.
- Restore Shelter House area gardens and pathways.

- Interpret the Concourse and improve parking.
- Remove maintenance garage

**Enhance Pedestrian Conditions/Calm Traffic**

- Construct a new pedestrian bridge along historic pathway on outer loop.
- Create an enhanced “parking garden” entrance at Seneca Street.
- Reestablish curbing along park roads.
- Introduce traffic calming crosswalks on park road.
- Restore historic pathways throughout the park.
- Remove parking and access road along creek on south side of the park. Provide new residential access from Potters Road.
- Restore formality at south entrance to the park



Figure 54 – Historic postcard of the Shelter House



Figure 55 - Recent photo of the Shelter House



### Implement Model Ecological Practices

- Implement a comprehensive reforestation and historic planting plan.
- Use best practices to stabilize the creek banks.
- Improve overflow areas to absorb more flood waters with wetland establishment and water controls.
- Reinterpret former lake edge

as wetland systems and flood water retention.

### Relocate Non-Historic Uses

- Relocate ice rink out of the park.
- Relocate senior center out of the park.
- Relocate golf house and parking to Seneca Street.

(See Figures 56-58)



Figure 57 - Concept design for the Casino Area and lagoon

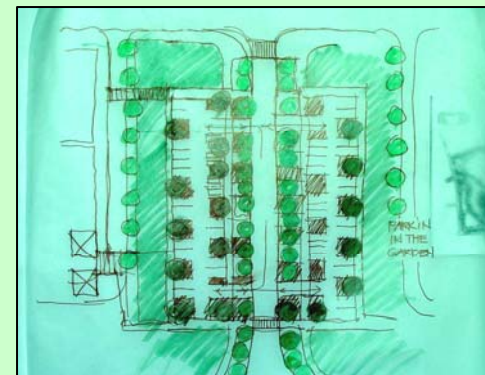


Figure 58 - A Parking Garden at the Seneca Street entrance