

Delaware Park

With nearly 350 acres, Delaware Park is by far the largest and most complex of the Buffalo Olmsted Parks. Originally known simply as “The Park,” Delaware Park plays a central role in the Olmsted Park System and in the city itself.

Defining Attributes

- Largest and most utilized of the Olmsted parks.
- Naturalistic landscape—Meadow, Lake, and, Woods.
- Location in the Olmsted Crescent cultural district.

Key Missing or Lost Elements

- Connectivity, a seamless and tranquil park.
- Pathways.
- The Gala Water lake shore line.
- The Meadow as a passive open space.
- The Quarry Garden.

- Grand Agassiz Circle entrance.
- The Lily Pond.
- Perimeter buffer plantings.
- Separation of pedestrians and vehicles.

(See Figures 14-18)

Critical Baseline Assumptions

- Upgrade the Scajaquada Expressway to a boulevard-style parkway.
- After a replacement course location is agreed upon by the user groups and the BOPC, relocate the golf course to a site that is acceptable to current users, offering improved golfing facilities (contingent upon further analysis of golf course impacts).

Suggested Areas of Focus

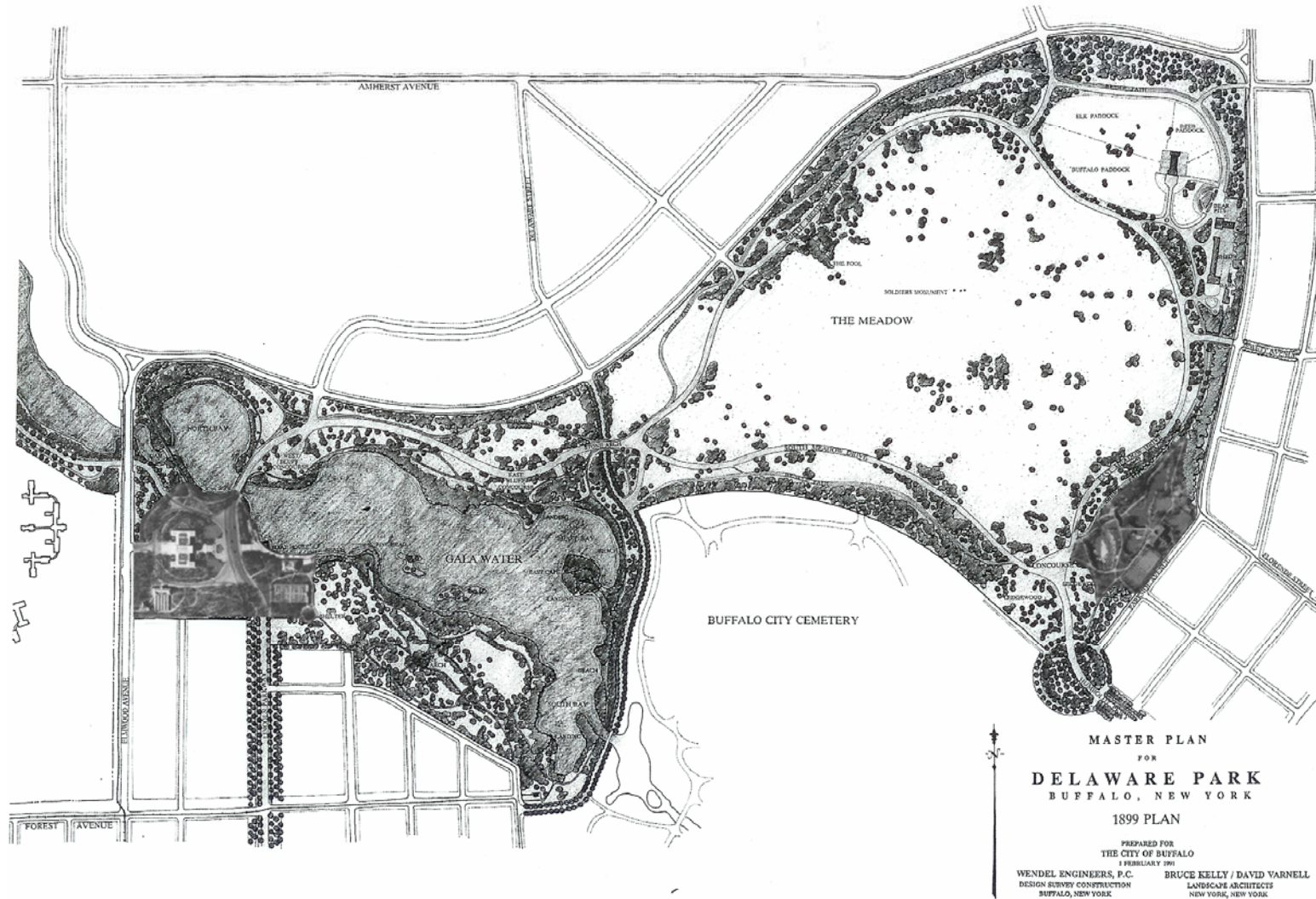
Grouping the lists of identified projects in a geographic and operational manner revealed a clear set of related activities that together comprise suggested



Figure 14 - Historic postcard of Delaware Park Lake and Casino



Figure 15 – The Quarry Garden next to the Parkside Lodge has been lost and should be interpreted



8 Figure 16 - 1899 Olmsted design for Delaware Park

areas of focus for future park investment.

- Reunite the Fragments of the Park carved up by highway infrastructure.
- Restoration of the Meadow, one of the three central environments envisioned for the park by Olmsted, is integral to historic park concept and function.
- Restore the Water’s Edge. Remove obstructions and enhance water quality and access.
- Restore the Casino Area. The park’s highly active use area is in need of rehabilitation and enhancement.
- Enhance the Lodge Area. This includes restoring the lodge itself, removing incompatible structures, and recreating/interpreting the Quarry Garden.

Preliminary Recommended Project List

Based on the goals and priorities outlined above, specific projects were grouped by the major initiative of which each project formed a component. The overall intent is to prioritize the major initiatives and then undertake the projects simultaneously. This coordinated, geographically-focused approach to project development has two major benefits—it generates “critical mass” and results in cost savings in engineering and construction costs.

For Delaware Park, the charette process generated the following project lists for the major initiatives identified above:

Reunite the Fragments of the Park

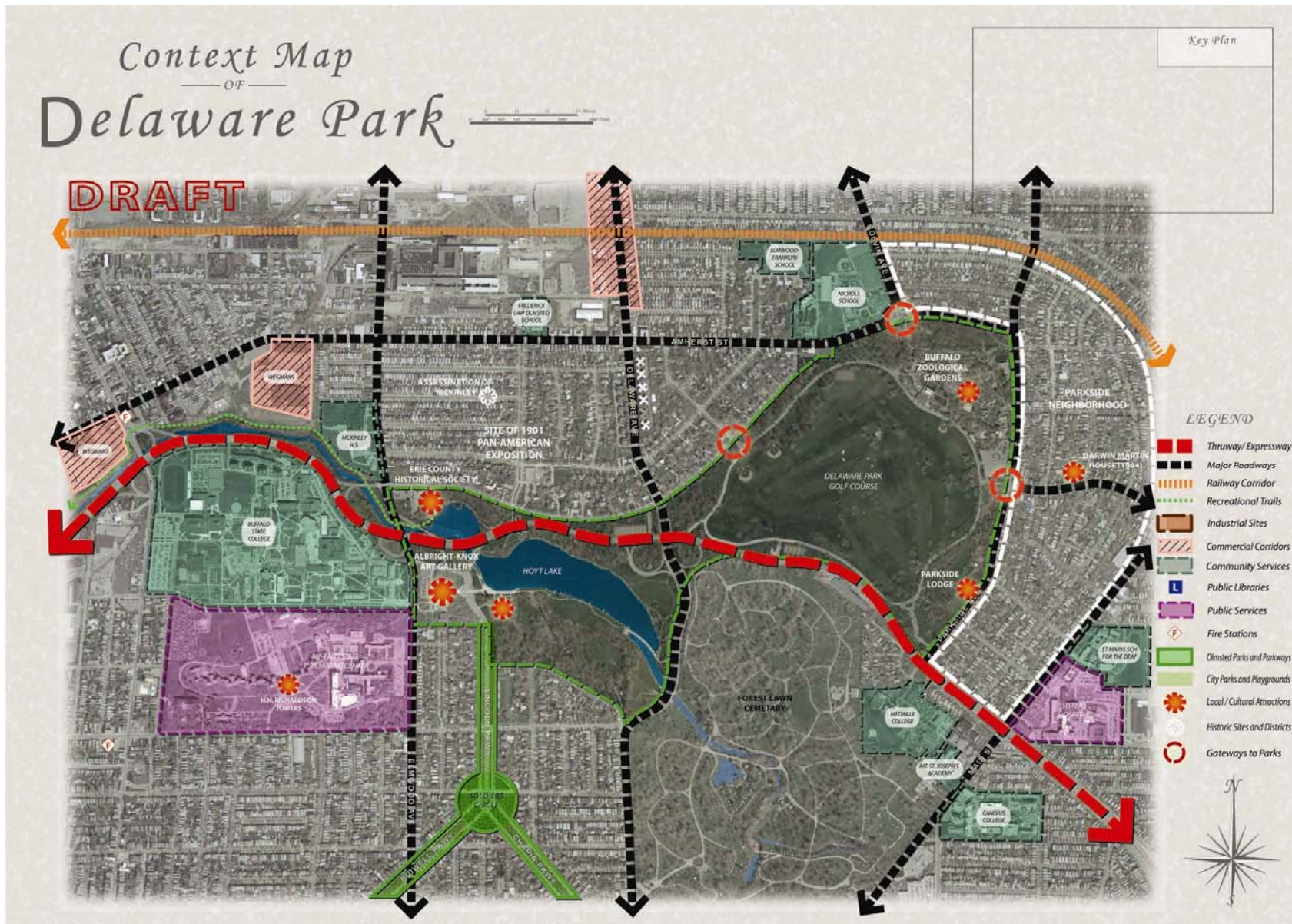
- "Upgrade" the Scajaquada Expressway to a parkway.



Figure 17 – The Gala Water (now Hoyt Lake) was once an active, vibrant area



Figure 18 – The plaza at Hoyt Lake by the Casino could be more active and vibrant



10 Figure 19

- Restore/add pathways connecting major park elements (Meadow, woods, water) including at-grade crossings across restored parkway.
- Redesign Agassiz Circle.
- Restore the Ring Road.
- Restore the pedestrian connection between the zoo and the park.
- Evaluate the potential for a

pedestrian connection between the cemetery and the park.

Restore the Meadow

- Recreate the Lily Pond.
- Restore Olmstedian pathway system.
- Restore perimeter plantings.
- Remove non-historic structures (transformer boxes, caddy shack).

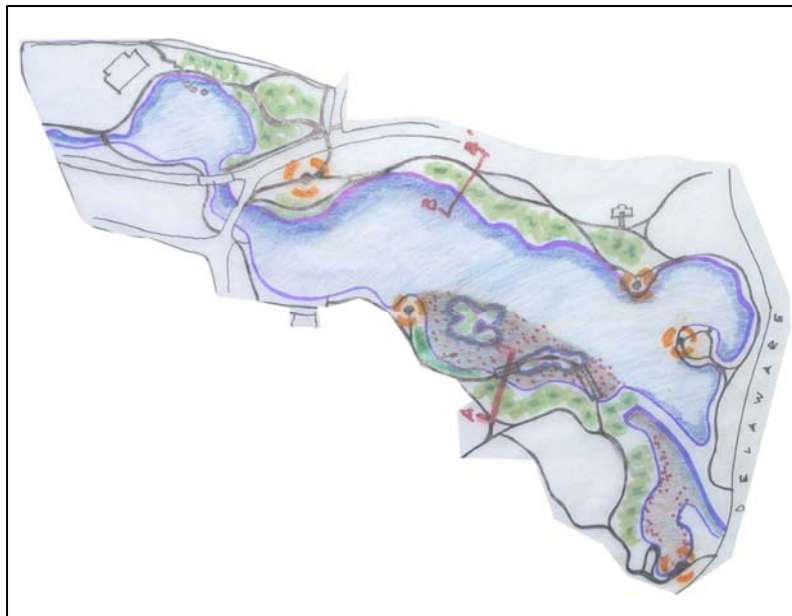


Figure 20 - Charette team's sketch plan for the shoreline of Hoyt Lake



Figure 21 - Heavily used Central Park Sheep Meadow



Figure 22 - The Delaware Park Meadow is now a golf course

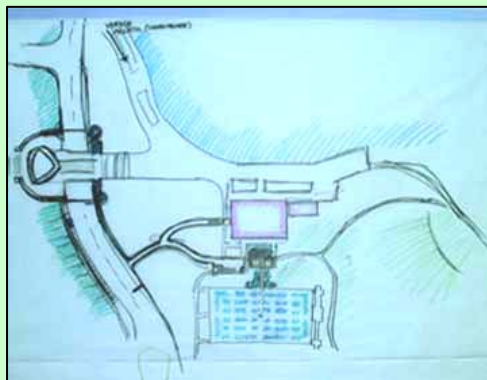


Figure 23 - Preliminary sketch design of the Casino area



Figure 24 - Possible reinterpretation of the Quarry Garden

- Rehabilitate the Point of the Meadow building.
- Relocate baseball diamond and rotate athletic fields.
- Remove Police Radio Tower
- Remove/relocate golf course (contingent upon further analysis of golf course impacts).

Restore the Water's Edge

- Restore continuous pathways around lakes.
- Undertake water quality enhancement project.
- Recreate the Spirehead.
- Create a wetland on Gala Water (Hoyt Lake).
- Create a pathway and boardwalk to island.

Restore the Casino Area

- Restore the Casino.
- Enhance the Rose Garden and renovate Pergola.
- Improve and narrow pathway east of Casino.
- Create a terrace on the south side of the Casino.

- Add buffer between the Rose Garden and the Playground.
- Recreate historic Vaux-designed settees.
- Rationalize services facilities (loading area, dumpsters).
- Design a contextually-appropriate seasonal stage for Shakespearean theater.
- Develop a pedestrian link to Albright Knox Art Gallery.

Enhance the Lodge Area

- Restore Parkside Lodge.
- Remove the storage/maintenance structure.
- Enhance the playground.
- Interpret/recreate the Quarry Garden.

(See Figures 19-24)