

South Park

Defining Attributes

- Botanical collection, arboretum.
- South Park Lake.
- Most intact Olmsted landscape in the system.
- Adjacent to a downtown (Lackawanna).
- Lord & Burnham-designed Conservatory within the park.

Key Missing or Lost Elements

- The Meadow as a passive open space.
- The boathouse.
- The perimeter buffer plantings.

(See Figures 34-38)

Critical Baseline Assumptions

- Restore meadow, relying on the Cazenovia Golf course as a better-quality public course (contingent upon further analysis of golf course impacts).

- Dead-end Hopkins Road at the park.

Suggested Areas of Focus

South Park is remarkably intact in terms of its historic integrity—few elements of the original design have been lost and few new features have been added. The park also is physically intact and unfragmented. As a result, recommendations focus largely on enhancing accessibility and user amenities and promoting equitable use. Major initiatives include:

- Restore the Meadow.
- Restore the environment, particularly the lake and lake edge.
- Enhance botanical collection.
- Improve circulation systems and connections with the community and nearby attractions.
- Rationalize park facilities.

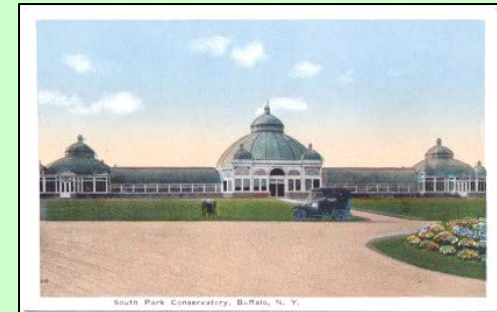


Figure 34 - Historic postcard of the Conservatory



Figure 35 - Historic view of the lake

Preliminary Recommended Project List

Recapture the Meadow/Arboretum

- Restore the full expanse of the historic Meadow/Arboretum.
- Reconstruct historic pedestrian path system.
- Remove the golf course (contingent upon further study of golf course impacts).

Enhance the Botanical Collection and Environment

- Re-establish first-rate botanical collections (arboretum, shrubs, perennials, etc.).
- Complete restoration of the Bog Garden.
- Restore perimeter plantings.
- Create a Father Baker Garden at Nason and South Park.
- Dredge the lake.

- Reestablish formal Botanical Gardens west of Conservatory.

Improve Circulation Systems

- Establish direct link with the Basilica (construct pedestrian pathway from Conservatory area).
- Close off Hopkins Road to vehicular through traffic and create a trail head loop.
- Repair the park ring road and bridge.
- Create pedestrian paths with links to downtown Lackawanna.
- Enhance southwest pedestrian entrance.

Rationalize Park Facilities

- Install site furnishings throughout park.
- Relocate bus loop off the park.
- Construct the Boathouse.
- Enhance appearance/utility of concession structure.

(See Figures 39-42)



Figure 37 – Olmsted’s vision of boats on the lake

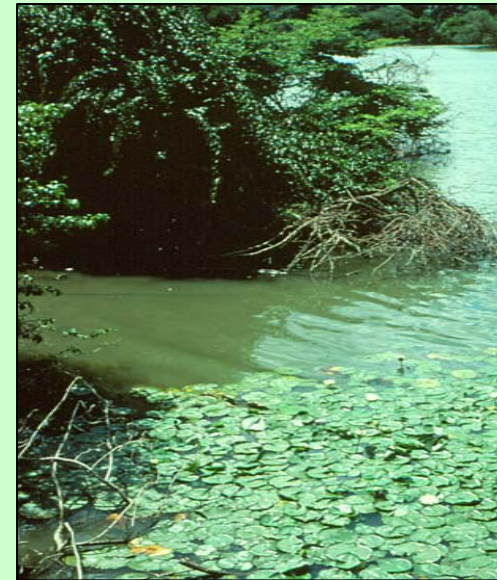


Figure 38 - The lake should be restored with dredging and sound ecological practices



Figure 39

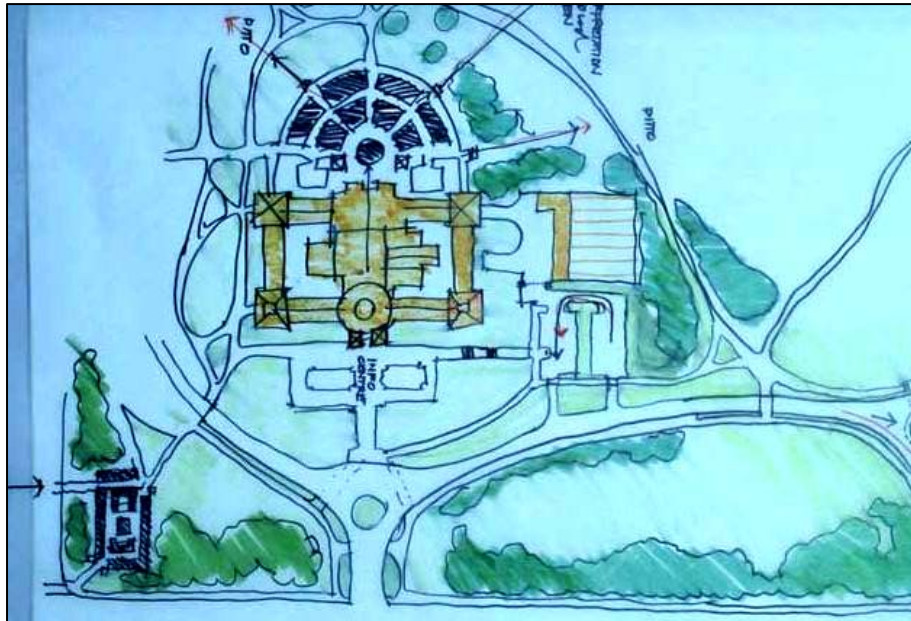


Figure 40 - Concept for the design of the Conservatory area

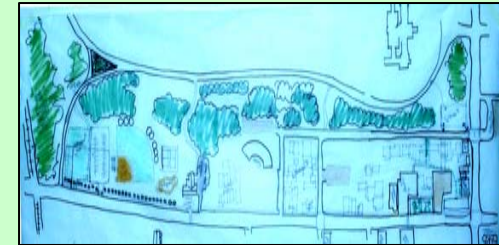


Figure 41 - Preliminary sketch designs of portions of South Park

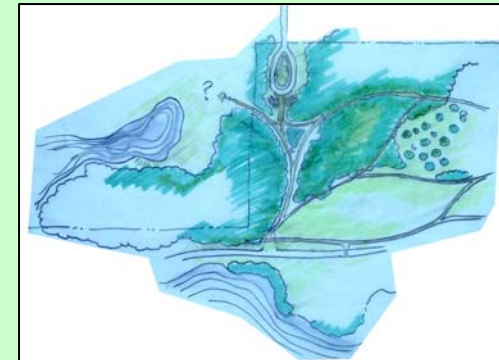


Figure 42 - Creating pedestrian walkways at the Hopkins Street entrance